

# Easy Series Intrusion Control Panel

## Reference Guide



**BOSCH**

Invented for life



# Content

1.	Core Facts	3
2.	Control Center	6
3.	System Overview	9
4.	Technical Data	12
5.	Programming Options	15



This revolutionary panel combines the advantage of exceptionally simple installation and extraordinarily easy operation.

## Benefits

- Programming via phone saves time and money
- Pioneering control center design matches your interior
- Very simple operation prevents false alarms
- Text-free and icon-based operation is intuitive
- Full voice support in your own language (many languages available)
- Integrated motion detector senses your presence to inform you about important system events
- Multiple configuration methods for both installers and users



## Dealers/Distributors

## Users

- |  |   |
|--|---|
| <ul style="list-style-type: none"> <li>• Easy Control Center mounting thanks to integrated bubble level</li> </ul>                         | <ul style="list-style-type: none"> <li>• Choice of languages guarantees easy operation</li> </ul>   |
| <ul style="list-style-type: none"> <li>• Convenient panel programming and software updating via programming and ROM update keys</li> </ul> | <ul style="list-style-type: none"> <li>• Multiple options to turn system on/off:                             <ul style="list-style-type: none"> <li>– one button</li> <li>– phone</li> <li>– passcode (PIN)</li> <li>– token</li> </ul> </li> </ul> |
| <ul style="list-style-type: none"> <li>• Easy programming through voice-driven menus</li> </ul>  | <ul style="list-style-type: none"> <li>• Personal phone messaging using either voice or text (SMS)</li> </ul>   |
| <ul style="list-style-type: none"> <li>• Single-button system test feature</li> </ul>  | <ul style="list-style-type: none"> <li>• Quiet control center mode for a good night's sleep</li> </ul>  |
| <ul style="list-style-type: none"> <li>• Revolutionary documentation (simplified at every level, e.g. installer)</li> </ul>                | <ul style="list-style-type: none"> <li>• Striking custom color display</li> </ul>   |
|  | <ul style="list-style-type: none"> <li>• Custom descriptor recording via phone menu for individual points and users (e.g. "Peter's bedroom" instead of "point #4")</li> </ul>   |

## 1.2. Features

### Main Features

- 8 inputs and 4 outputs
- 20 users with 3 different authority levels
- Intrusion and fire applications
- False alarm reduction through
  - Simplicity of use
  - Graduated Annunciation
  - Cross zoning
  - Intelligent Threat Assessment
  - SIA false alarm compliant
  - Two-way voice verification
- Innovative control center design
- Extremely simple to operate
- Text-free, icon-based control center
- Supports 20 languages (from control center and phone)
  - English
  - English, UK
  - German
  - Dutch
  - Hungarian
  - Czech
  - Polish
  - Italian
  - Spanish
  - Swedish
  - French
  - Portuguese
  - Chinese
  - Russian
  - Greek
  - Norwegian
  - Danish
  - Finnish
  - Turkish
  - Japanese
- Integrated presence detector gives you important panel information as soon as you approach
- Simple operation prevents mistakes and false alarms
- Easy to maintain
  - Remote or on-site maintenance
- Accessory modules already integrated
  - Voice dialer
  - Local and remote DTMF telephone control
  - RFID reader
  - Two-way audio alarm verification
  - Presence detector

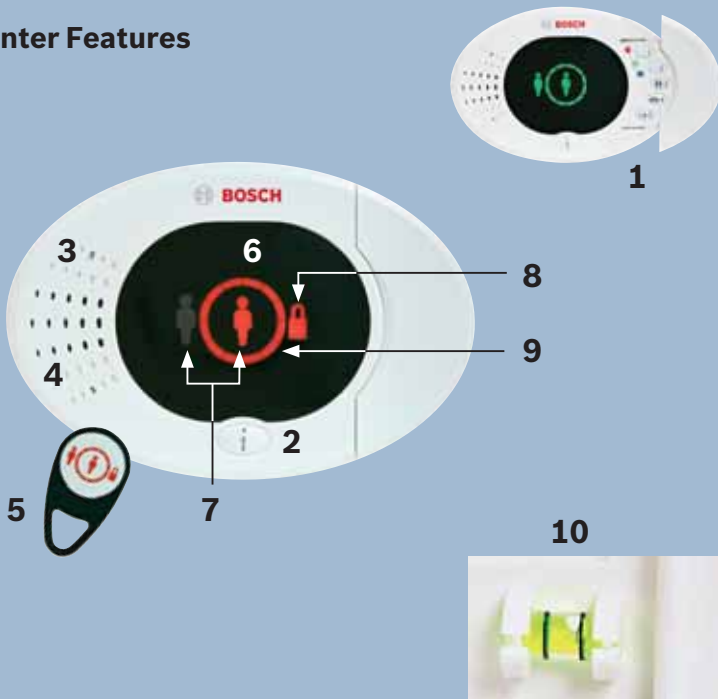
Dealers/Distributors	Users
<ul style="list-style-type: none"> <li>• Programming options               <ul style="list-style-type: none"> <li>– Voice-prompted phone (basic)</li> <li>– Voice-confirmed phone (expert)</li> <li>– Programming key</li> </ul> </li> </ul>	<ul style="list-style-type: none"> <li>• Multi-color, icon-based display</li> </ul>
<ul style="list-style-type: none"> <li>• Easy installation because of               <ul style="list-style-type: none"> <li>– Color-coded, high quality terminal strips</li> <li>– Integrated control center bubble level</li> </ul> </li> </ul>	<ul style="list-style-type: none"> <li>• Single-action control center               <ul style="list-style-type: none"> <li>– Proximity token, button or PIN</li> </ul> </li> </ul>
<ul style="list-style-type: none"> <li>• Single-button system test               <ul style="list-style-type: none"> <li>– AC and battery</li> <li>– Inputs</li> <li>– Outputs, including external sounder</li> <li>– System walk test</li> <li>– Communicator test</li> </ul> </li> </ul>	<ul style="list-style-type: none"> <li>• Alarm communication               <ul style="list-style-type: none"> <li>– Digital dialer</li> <li>– Voice dialer</li> <li>– Ethernet (with C900TTL-E)</li> <li>– Local sounders/strobes</li> </ul> </li> </ul>
<ul style="list-style-type: none"> <li>• Local and remote test and diagnostics</li> </ul>	<ul style="list-style-type: none"> <li>• Personal messaging formats               <ul style="list-style-type: none"> <li>– Voice dialer</li> <li>– Text messaging (SMS)</li> </ul> </li> </ul>
	<ul style="list-style-type: none"> <li>• Full remote phone control</li> </ul>
	<ul style="list-style-type: none"> <li>• Quiet control center mode</li> </ul>



## 2. Control Center

The control center combines audio and visual information. It speaks in your language while showing animated icons to reinforce the spoken words. You only need to look at and listen to the control center to get system information.

### Control Center Features



## **1 Buttons – Access to special functions**

Specific buttons (1+2) to initiate fire, police or medical alarm. The other buttons can be used for volume control, chimes and adding, deleting or changing users.

[1] Fire

[2] Police

[1] + [2] Medical

[3] Add/Delete/Change User

[4] Chime Mode

[5] Volume Adjustment

## **2 Single-Action Information Button**

This button gives access to a help menu. It can also be used to turn the system on or off.

## **3 Presence Detector**

The control center senses your presence. If the system experiences any problems while you're away, the control center informs you whenever you approach.

## **4 Audio Components**

An integrated speaker and a built-in microphone give you the possibility for two-way voice communication.

The speaker delivers tones and instructions while the built-in microphone allows you to speak with monitoring center personnel.

## **5 RFID Reader and Token**

When you present the proximity token to the internal RFID Reader (Radio Frequency Identification Reader), you can turn the system on and off, silence alarms and reset the control panel.

## **6 High-contrast, multicolor icon display**

## **7 Occupied vs. unoccupied status indicators**

## **8 Protection on indicator**

## **9 Animated “shield of protection”**

## **10 Integrated bubble level for easy installation**

## 2.1. Turning Your System On



### 1. System is armed and occupied

Activates only your perimeter protection, and enables exit delay.



### 2. System is armed and unoccupied

Activates perimeter and interior protection, and enables exit delay.

### 3. Force Protection

Takes faulted points out of service when turning your system on. For example, force protection allows you to turn the system on while leaving a window open.

### 4. Quick Protection

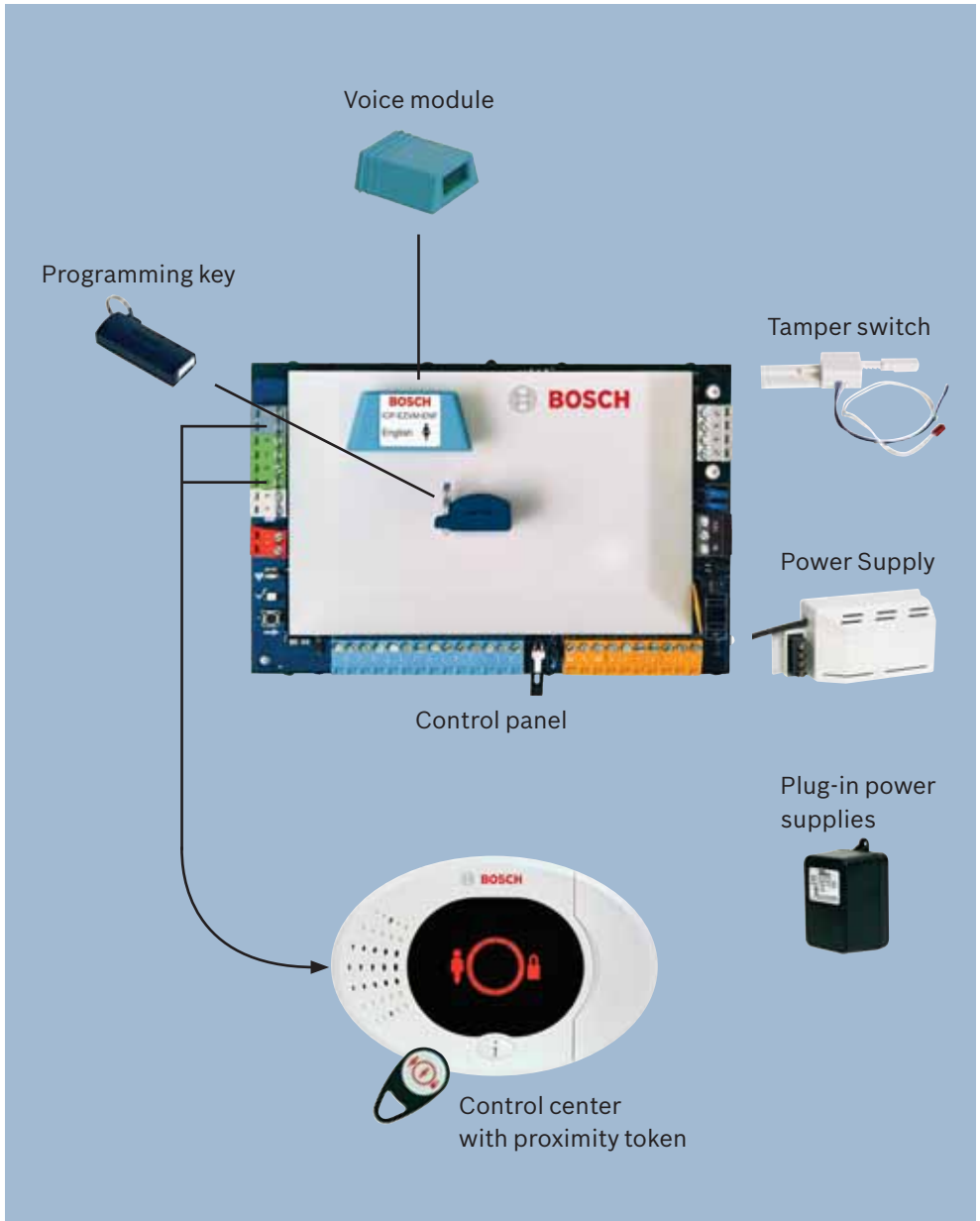
Programs specific quick methods for occupied and unoccupied protection. For example, the single-action information button on the control center can be programmed so that pressing the button once initiates armed and occupied protection and pressing it twice initiates armed and unoccupied protection.

### 5. Custom Protection

Activates only specific points in your system. The points that are not selected will be disabled. Any point that is configured as an "Interior walk-through" point type will initiate an entry delay ("Part set" function).



### 3. System Overview



## 3.1 Device Explanation

### Control Panel



The control panel has an integrated telephone digital communicator. It provides local and remote dual tone multi-frequency (DTMF) control, a digital communicator (SIA, Contact ID, Voice, Fast Format) and personal messaging formats (Voice and SMS Text Messaging). Terminal strips are color-coded and each input and output has a dedicated pair of terminals. The programming key and ROM update key support a “hot” plug-in and perform actions automatically.

### Proximity Token



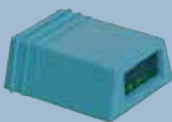
Each user controls the system with a token that is unique to the user. When you present the proximity token to the control center, you can turn the system on and off, silence alarms, and reset the control panel.

### Control Center



For specifications please refer to “Control Center” on page 6.

### Voice Module



Supports the voice you hear from the control center in your language of choice. Voice annunciation occurs for control panel conditions, events, acknowledgements and errors. It also supports the voice-prompted programming by phone. More than 20 languages are available.

### Programming Key



Uploads and downloads programming information. Use the programming key to quickly program a group of control panels with the same characteristics, e.g. in large projects and for data backups.

### Tamper Switch



Combination tamper switch senses open enclosure as well as removal from the wall. The tamper switch contains a wire loop that can accommodate additional tamper outputs.

### Power Supply



0-250 VAC wire-in power supply for hardwired primary power requirements.

### Plug-in Power Supplies



120 VAC plug-in power supplies. Available in different voltages and plug configurations.

## 4. Technical Data

### Core Capacities

- 8 on-board points
- 4 outputs (on-board)
- Up to 4 control centers
- 20 users (each user supports PIN, RFID token)
- 500 time/date stamped history events
- 1.0 A auxiliary power supply (1.4 A total)
- Integrated two-way audio verification
- Integrated communicator:
  - Voice dialer
  - Digital formats; SIA, Contact ID and Fast Format
  - Personal text messaging (SMS)
- Built-in DTMF local and remote control

## 4.1 False Alarm Reduction

### Graduated Annunciation

In case a security point is violated, the indication for an alarm release gradually increases. The system increases the control center volume, changes the display animation and eventually activates the warning devices before an actual alarm report is sent to the monitoring center (reports may still be aborted or cancelled by the user).

### Cross Zoning (a.k.a. Sequential Verification)

When two or more input sensors activate within a specified time period, an intrusion alarm is considered verified: e.g. if a door sensor and a motion detector both initiate an alarm, the system sends a verified alarm report (otherwise, an un-verified alarm report is sent).

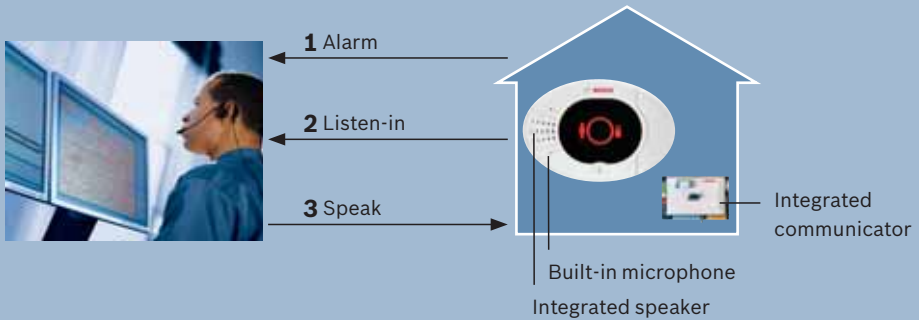
### Intelligent Threat Assessment

Based on its current level of protection, input device types, input conditions, and accumulated fault count, the control panel assesses the potential threat. If the threat reaches a specific level, the system sends a verified alarm report (otherwise, an un-verified alarm report is sent).

## Two-Way Voice Verification

Each control center includes a speaker and a microphone. These components give you and the monitoring center the ability to listen-in and speak to the premises. Alarm verification and personal communications can both be achieved.

Once the two-way voice verification session has been established, the remote user is able to listen-in and speak to each connected control center simultaneously.



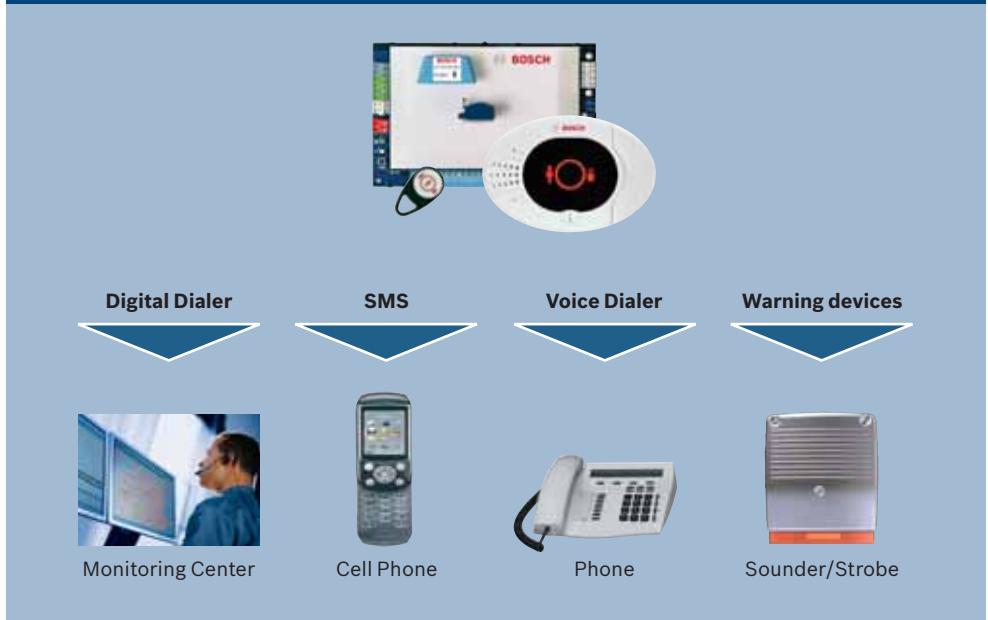
### Example:

- 1** Panel transmits the initiated alarm to the receiving station.
- 2** Monitoring center personnel listens into the premises and distinguishes between an alarm or a false alarm.
- 3** Personnel can speak to the premises. In case of an accidental alarm, customers provide previously defined codes to identify themselves as authorized users.

The customers also are able to listen into their premises whenever they like (via telephone call).

## 4.2 Alarm Notification

### Different ways of alarm notification:



### Digital Dialer

This digital communicator sends reports to a monitoring center. Based on the type of report received, the monitoring center will follow a set of predetermined actions. The supported communicator formats are SIA, Contact ID, and Fast Format. Ethernet reporting is possible with the addition of a C900TTL-E.

### Voice Dialer

This format is used whenever event reporting requires a preset voice message to be delivered via telephone. This feature can be used for both monitoring center reporting and also for personal messaging.

### Personal Text Messaging (SMS)

When configured, this personal messaging format can be used to inform you about alarms, system problems, and whenever your system is turned on and off.

### Sounder/Strobe

These warning devices provide an indication whenever intrusion or fire alarms have occurred at the protected premises.

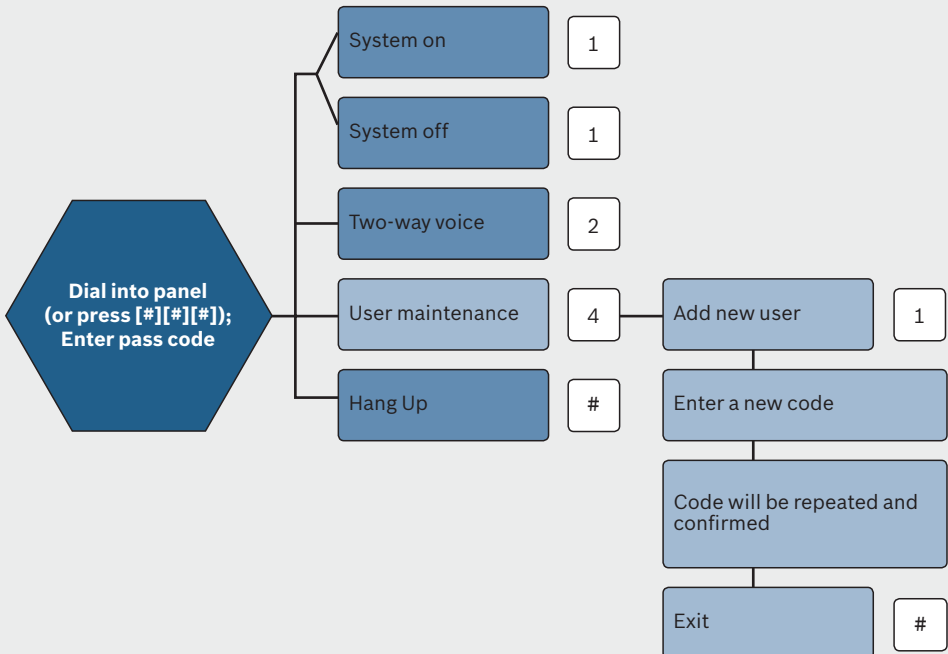
## 5. Programming Options

### 5.1 Programming Key

A programming key uploads and downloads programming information. Use the programming key to quickly program a group of control panels with the same characteristics. This device can be plugged-in without having to remove power from the control panel.

### 5.2. Phone

Use the phone to take advantage of the following options: system on, system off, two-way voice, and user maintenance.



## **Bosch Security Systems**

130 Perinton Parkway  
Fairport, New York 14450  
phone: 800.289.0096  
fax: 585.223.9180  
[www.boschsecurity.us](http://www.boschsecurity.us)

All rights reserved  
Printed in U.S.A.  
Part# F01U009294B



## **Tradition of quality and innovation**

For over 100 years, the Bosch name has stood for quality and reliability. Bosch Security Systems proudly offers a wide range of fire, intrusion, social alarm, CCTV, management and communication systems and components to help you find the solution for any application. We are the global supplier of choice for innovative technology backed by the highest level of service and support. When you need solutions you can rely on, choose Bosch.